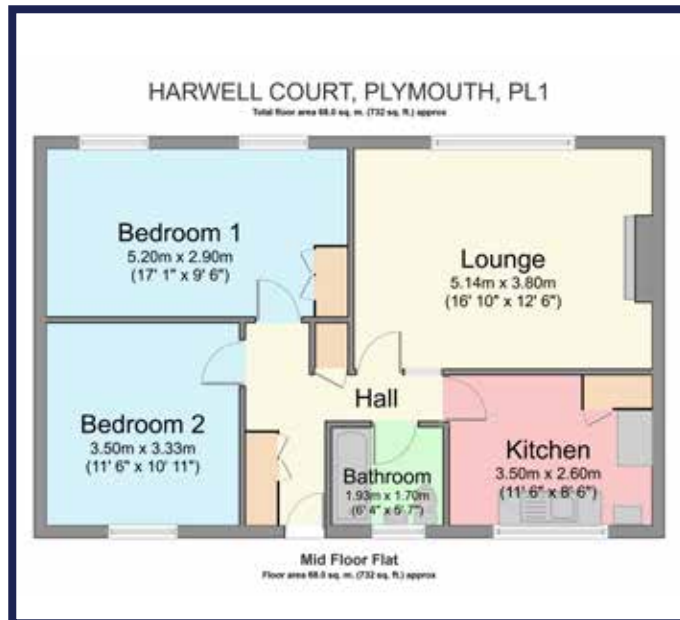


Lot No.: 1

10 HARWELL COURT

FRANKFORT GATE, CENTRAL PLYMOUTH, DEVON, PL1 1PU



- Long leasehold with vacant possession ●
- A purpose built self contained two bedroomed second floor flat ●
- South facing aspect overlooking the Frankfort Gate shopping precinct at the west end of the City Centre ●
- Although now in need of a scheme of modernisation, this spacious apartment readily lends itself for refurbishment for owner occupation or for letting purposes as a 'buy to let' proposition ●

Property Details

Location

This flat is situated on the Northern side of Frankfort Gate in the heart of the west end of the City Centre now known as the Independent Quarter with its wide range of small business outlets and other commercial activities.

Description

A spacious second floor apartment in a prime central location believed to have been built in about 1957 but now requiring renovation to replace fittings which are original in many cases. However, the apartment enjoys the benefit of gas fired central heating and double glazing and could be readily refurbished for owner occupation or for letting purposes.

EPC Rating: C76

Accommodation

Second Floor

Entrance Hall, Sitting Room, Kitchen, No.1 Bedroom (double), No.2 Bedroom (double) and Bathroom with bath, wash hand basin and w.c.

Outside

Store in rear courtyard

Tenure

Long leasehold with vacant possession
Lease commencing 8th August 1988 and expiring 18th March 2109 at a Ground Rent of £10 per annum

Guide Price £50,000 - £60,000 (plus fees stated inside front cover)

Sole Agents

SHOBROOK & CO LTD

Vendors Solicitors

EVANS HARVEY, 37 & 39 Morshead Road, Crownhill, Plymouth PL6 5AD

Tel: 01752 785 715

Reference: Michael Pearce